



**GIA**  
GEM TRADE LABORATORY®

**New York Headquarters**  
580 Fifth Avenue | New York, NY 10036-4794  
T: 212-221-5858 | F: 212-575-3095

**Carlsbad**  
5355 Armada Drive | Carlsbad, CA 92008-4699  
T: 760-603-4500 | F: 760-603-1814

**COLORED DIAMOND  
IDENTIFICATION AND ORIGIN REPORT**

December 01, 2005

Shape and Cutting Style .....CUT-CORNERED SQUARE  
MIXED CUT

Measurements .....4.76 x 4.74 x 3.66 mm

Weight .....0.75 carat

Color

Origin .....NATURAL

Grade .....FANCY

.....PINK

Distribution .....EVEN

Comments:

None

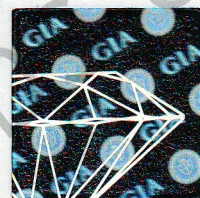
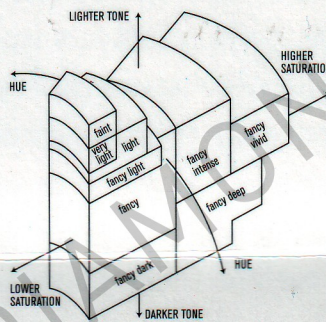


212594501

This Report is not a guarantee, valuation or appraisal. This Report contains only the characteristics of the diamond described herein after it has been graded, tested, examined and analyzed by GIA Gem Trade Laboratory under magnification, and/or has been inscribed, using the techniques and equipment available to GIA Gem Trade Laboratory at the time of the examination and/or at the time of being inscribed, including magnification, master color comparison diamonds, standardized viewing environment and light source, electronic carat balance, high intensity short wave fluorescence imaging system, optical measuring device, micro laser inscribing device, ProportionScope®, ultraviolet lamps, millimeter gauge, additional visual color comparators, spectroscope, Illuminator Polariscopes®, immersion liquids, ultraviolet-visible and infrared spectrometers, X-ray fluorescence spectrometer, gamma-ray spectroscopy systems, beta radiation scintillation detector, radiation survey meter, X-ray luminescence equipment, and ancillary instruments as necessary. The recipient of this Report may wish to consult a credentialed Jeweler or Gemologist about the information contained herein.

GIA  
COLORED  
DIAMOND  
SCALE

Illustration of GIA  
fancy color grade  
interrelationships



**IMPORTANT DOCUMENT, STORE SAFELY**

The security features in this document, including the hologram, security screen, microprint lines and chemical sensitivity, in addition to those not listed, exceed document security industry guidelines.

**NOTICE: IMPORTANT  
LIMITATIONS ON BACK**

COPYRIGHT ©2000 GEMOLOGICAL INSTITUTE OF AMERICA, INC.

GIA REPORT 14728337