



GIA
GEM TRADE LABORATORY

New York Headquarters
580 Fifth Avenue | New York, NY 10036-4794
T: 212-221-5858 | F: 212-575-3095

Carlsbad
5355 Armada Drive | Carlsbad, CA 92008-4699
T: 760-603-4500 | F: 760-603-1814

**COLOR DIAMOND
GRADING REPORT**

September 09, 2002

Shape and Cutting Style **CUT-CORNERED SQUARE
MODIFIED BRILLIANT**

Measurements **3.88 x 3.81 x 2.98 mm**

Weight **0.41 carat**

Proportions

Depth **78.2 %**

Table **69 %**

Girdle **THICK TO VERY THICK**

Culet **NONE**

Finish

Polish **GOOD**

Symmetry **GOOD**

Clarity Grade **VVS1**

Color

Origin **NATURAL**

Grade **FANCY**

..... **BLUE**

Distribution **EVEN**

Fluorescence **NONE**

Comments:

NONE



This Report is not a guarantee, valuation or appraisal. This Report contains only the characteristics of the diamond described herein after it has been graded, tested, examined and analyzed by GIA Gem Trade Laboratory under 10X magnification, and/or has been inscribed, using the techniques and equipment available to GIA Gem Trade Laboratory at the time of the examination and/or at the time of being inscribed, including fully corrected triplet loupe and binocular microscope, master color comparison diamonds, standardized viewing environment and light source, electronic carat balance, high intensity short wave fluorescence imaging system, optical measuring device, micro laser inscribing device, ProportionScope®, ultraviolet lamps, millimeter gauge, additional visual color comparators, spectroscope, Illuminator Polariscope®, immersion liquids, ultraviolet-visible and infrared spectrometers, X-ray fluorescence spectrometer, gamma-ray spectroscopy systems, beta radiation scintillation detector, radiation survey meter, X-ray luminescence equipment, and ancillary instruments as necessary. Red symbols denote internal characteristics (inclusions). Green or black symbols denote external characteristics (blemishes). Diagram is an approximate representation of the diamond, and symbols shown indicate type, position, and approximate size of clarity characteristics. All clarity characteristics may not be shown. Details of finish are not shown. The recipient of this Report may wish to consult a credentialed Jeweler or Gemologist about the importance and interrelationship of cut, color, clarity and carat weight.

**GIA
CLARITY
SCALE**

FLAWLESS
INTERNALLY
FLAWLESS

VVS₁

VVS₂

VS₁

VS₂

SI₁

SI₂

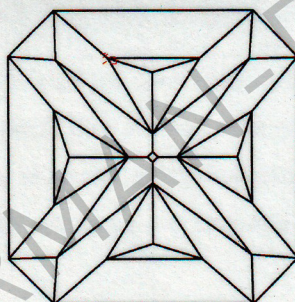
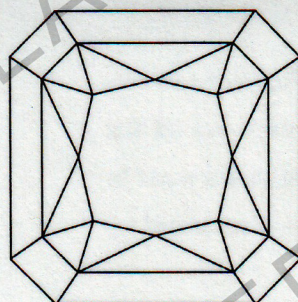
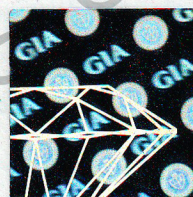
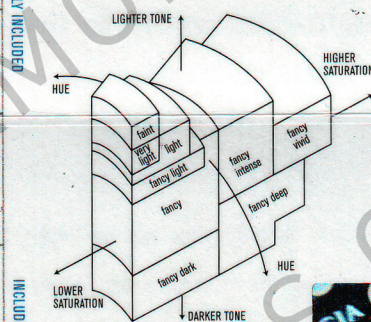
I₁

I₂

I₃

**GIA
COLORED
DIAMOND
SCALE**

Illustration of GIA
fancy color grade
interrelationships



KEY TO SYMBOLS

Chip
Feather

IMPORTANT DOCUMENT, STORE SAFELY

The security features in this document, including the hologram, security screen, microprint lines and chemical sensitivity, in addition to those not listed, exceed document security industry guidelines.

**NOTICE: IMPORTANT
LIMITATIONS ON BACK**

COPYRIGHT ©2000 GEMOLOGICAL INSTITUTE OF AMERICA, INC.